



# MONTHLY MEMBERSHIP PROGRESS REPORT

District 323 F2

Results as of: 2/28/2017

GMT: KAMLESH JAIN

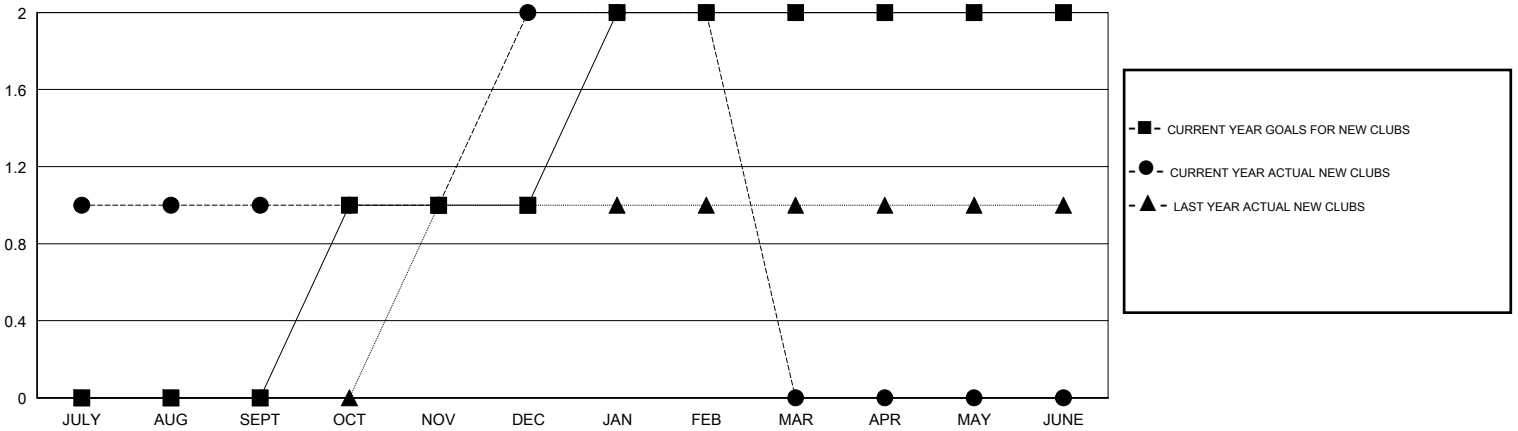
LOCATION INDIA

GMT CA

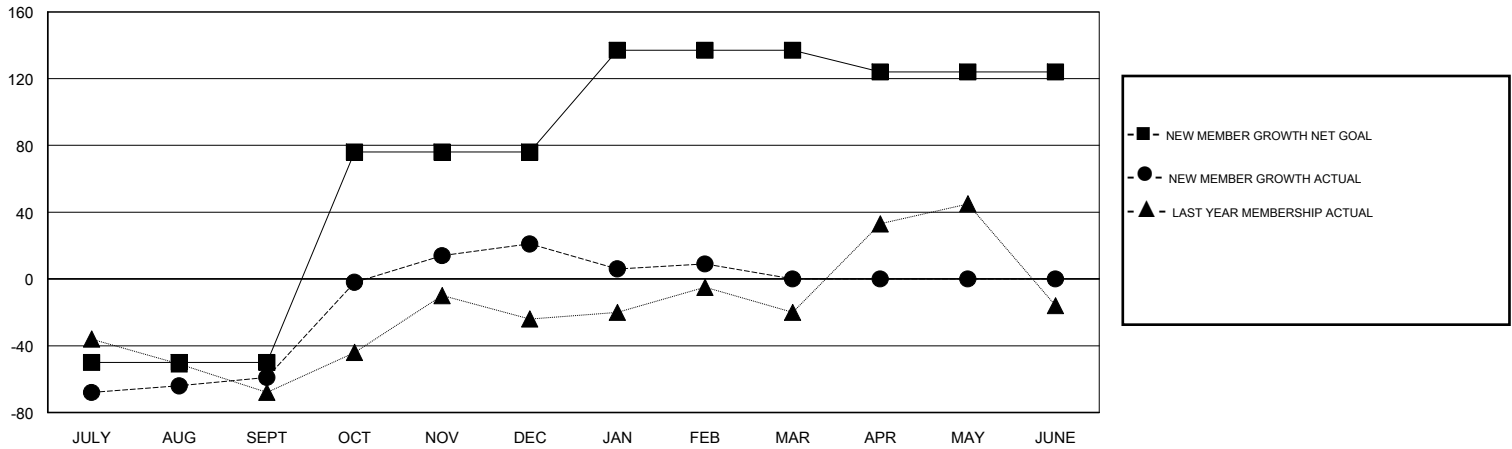
Clubs			
RESULTS FOR 2016-2017			
QUARTER	NEW CLUB GOAL	NEW CLUBS	DROPPED CLUBS
JULY/AUG/SEPT	0	1	2
OCT/NOV/DEC	1	1	1
JAN/FEB/MAR	1	0	1
APR/MAY/JUNE	0	0	0

Members			
RESULTS FOR 2016-2017			
QUARTER	NEW MEMBER GROWTH NET GOAL (not reinstated or transfers)	NEW MEMBER GROWTH ACTUAL (not reinstated or transfers)	DROPPED MEMBERS ACTUAL (including transfers)
JULY/AUG/SEPT	-50	64	123
OCT/NOV/DEC	126	100	20
JAN/FEB/MAR	61	15	27
APR/MAY/JUNE	-13	0	0

GOALS AND ACTUAL NEW CLUBS CUMULATIVE



GOALS AND ACTUAL MEMBERS CUMULATIVE



DROPPED CLUBS: 4	27 CLUBS OF 59 ADDED 1 OR MORE NEW MEMBERS	<u>GENDER DISTRIBUTION</u>	
DROPPED MEMBERS		MALE	1,869 (76.25%)
DECEASED	7	FEMALE	582 (23.75%)
CLUB CANCELLED	23	TOTAL FAMILY UNIT MEMBERS	
OTHER	140	1,081	
TOTAL	170	FAMILY MEMBERS PAYING HALF DUES	
		591	

[CLICK HERE FOR CUMULATIVE MEMBERSHIP DATA](#)